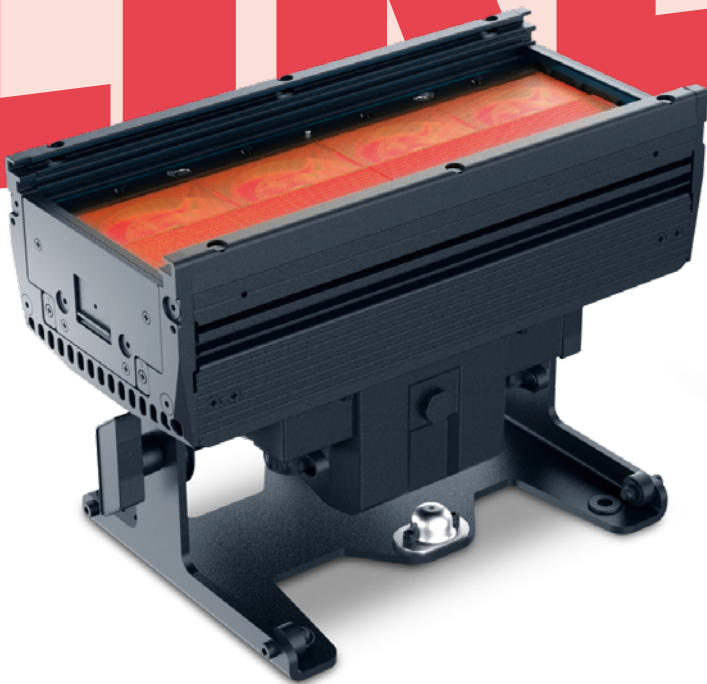


LIGHT IT LIKE IT



Evo Linebar 12

- | | | | | | |
|--|--|--|--|--|--|
| | | | | | |
| | | | | | |

Adopts 4 × 100W RGBAL LED
 Output: 11500Lm
 Beam angle: 24° × 21°
 Field angle: 46° × 49°
 Uniform RGBAL color mixing system and rainbow effect
 Create unlimited movement, infinite color changes

OPTIC

- Source: 4 × 100W RGBAL LED
- Output: 11500 Lm
- Beam angle: 24° × 21°
- Field angle: 46° × 49°
- CCT: 2400~8500K
- CRI: 95
- R9: 95
- Source lifetime: >20000 H

EFFECT

- Strobe: 1 ~ 25 Hz
- Dimmer Curve: 4 kinds
- Built effects: 12 kinds

CONTROL & PROGRAM

- Channel: 1 / 9 / 16 / 21 / 15 / 34 / 54 CH
- Protocol: DMX512, RDM, ArtNet/sACN
- Data connection: 5PIN XLR, RJ45
- Display: LCD display

SOFTWARE

- Via DMX signal to update
- Intelligent temperature protection to ensure LED service life

HOUSING

- Aluminum alloy structure
- Fan cooling
- Resistant to salt corrosion

POWER CONSUMPTION

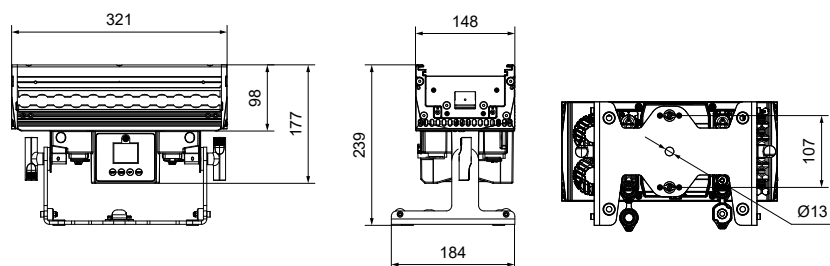
- Voltage: AC 100V~240V 50/60Hz
- Rated power: 200 W

OTHER

- IP rating: IP66
- Work environment: -40°C ~ 45°C
- Startup environment: -20°C ~ 45°C

SIZE & WEIGHT

- Size: 321 × 184 × 239 mm
- N.W: 6.5 kgs



PHOTOMETRICAL DATA

