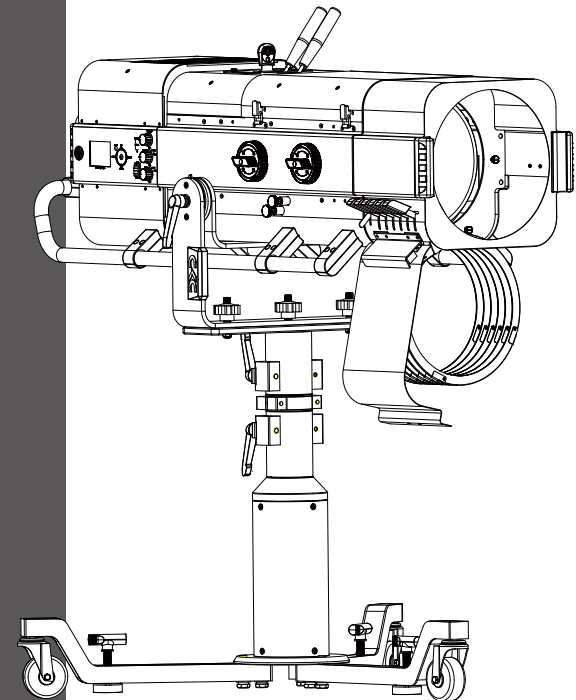


**CKC**

# Followw<sup>o</sup>



[www.ckclighting.com](http://www.ckclighting.com)

**CKC LIGHTING CO.,LTD**

Addr.:335 Nansha Avenue, Tung Chung Town,  
Nansha District, Guangzhou City, China.  
TEL: (020)3920 4506 FAX: (020)3920 4631  
WEB: [www.ckclighting.com](http://www.ckclighting.com)



Before carrying out any installation, maintenance, or cleaning of the lighting fixtures, please confirm that the power has been cut off! Before using this fixture, please read this manual. Our company reserves the right to change product design and specifications without prior notice.

# CONTENTS

<b>1. Security Warning Information</b>	<b>1</b>
<b>2. Product Introduction</b>	<b>3</b>
2.1 Dimensional drawings	3
2.2 Fixture packaging accessories	3
<b>3. Main technical parameters of the equipment</b>	<b>3</b>
<b>4. Packaging and transportation</b>	<b>5</b>
4.1 Disassemble packaging	5
4.2 Equipment installation	5
<b>5. Installation Requirements Explanation</b>	<b>5</b>
5.1、GOBO Installation	5
5.2、Color gel frame holder Installation	6
5.3、Tripod Stand Installation	7
<b>6. Power and signal connection</b>	<b>7</b>
6.1 Power and signal socket	7
6.2 Power Connect	8
6.3 Signal Connect	8
<b>7. Control panel</b>	<b>9</b>
7.1 Panel Introduction	9
7.2 System menu	10
<b>8. DMX control channel table</b>	<b>11</b>
<b>9. Control circuit diagram</b>	<b>13</b>
<b>10. Regular maintenance</b>	<b>13</b>
10.1 Cleaning and maintenance	13
10.2 Fault analysis and handling	14

## ★ Statement ★

- This manual contains important information on safe use and installation. Please read it carefully and follow the requirements for operation and installation. Please keep this manual properly;
- The equipment has good performance and complete packaging when it leaves the factory. The operator should strictly follow the warning items and operating instructions stated in the manual. Any malfunction or damage caused by misuse or neglect of the manual is not within the scope of our company's responsibility and warranty;
- The relevant information in this manual is for reference only. All lighting products are subject to the actual product. Any changes will not be notified separately, and our company reserves the right of final interpretation.

### 1. Security Warning Information



#### Attention !

Please read the safety requirements information in this section carefully before installing, powering on, operating, or repairing the lighting fixtures.



- This product is for professional use and is not suitable for other purposes;
- After receiving the lighting fixtures, please check if the packaging is complete and unpack to check if the equipment has been damaged due to transportation. If there is any damage caused by transportation, please do not use this lamp and contact local technicians or manufacturers as soon as possible;
- When transporting again, please use the original packaging materials;
- If there is obvious damage to the machine casing, it should be replaced in a timely manner;
- When hanging lamps, it is necessary to verify that the hanging equipment can withstand more than 6 times the weight of the lamp. After installation, it is necessary to verify that the lamp cover and installation buckle are secure and undamaged. At the same time, a safety rope should be used as an auxiliary safety for the lamp and fixed on the truss;
- The light source inside this luminaire should be replaced by the manufacturer, its service agent, or a similarly qualified person;
- If you have any other questions about how to safely operate the equipment, please contact our technical personnel or call our service hotline;
- This product has a protection level of IP30 and can be Suitable for indoor use;
- Avoid direct external strong light shining on the lens, which may cause the lens to focus and burn out internal components;
- Before turning off the lighting fixture, please adjust the zoom lens to the maximum angle (DMX value: 255), such as the position closest to the LED.



- Lighting fixtures should be kept clean and avoid prolonged use in overheated or dusty environments to prevent contact with chemical liquids;
- When using the product, attention should be paid to avoiding serious or fatal injuries caused by fire, heat, electrical shock, and ultraviolet radiation. Before powering on or installing, read the instruction manual first. Follow the safety precautions for operation and pay attention to the warning signs on the instructions and equipment;
- Only professionals are allowed to install, operate, and maintain lighting fixtures, and strictly follow the procedures stated in the operating instructions.



- The eyes cannot directly look at the luminous object;
- Do not connect this device to any dimmer;
- If visible damage occurs to the protective casing, lens, and display screen on the lighting fixture, it is considered as damage to the point of loss;
- Please do not place any filters or other items at the light outlet, and do not replace non original parts;
- The minimum safe illumination distance of the lamp is 1m.



- Before installation, please confirm that the power supply voltage used matches the voltage indicated on the light fixture. Each lighting fixture should be properly grounded and electrically installed according to relevant standards;
- Please disconnect the power before repairing or cleaning the equipment;
- During the operation of the lighting fixtures, touching the wires is prohibited to prevent electric shock;
- If the external soft cable or wire of this lamp is damaged, the wire should be replaced by the manufacturer, its agent, or a similarly qualified person to avoid danger;
- Avoid flammable liquids, water, or metal conductors from entering the interior of the lamp to prevent electric shock or fire. If any foreign objects enter the lamp, immediately cut off the power supply;
- When multiple lamps are operated in series, the signal lines can be connected in multiple ways, but the power supply must be connected separately.



- The lighting fixtures work normally at -20 °C to 45 °C . When replacing any components or accessories in the equipment, ensure that the power is disconnected to prevent electric shock and injury;
- The maximum surface temperature of the lamp during operation can reach 70 °C , please do not touch it with bare hands.

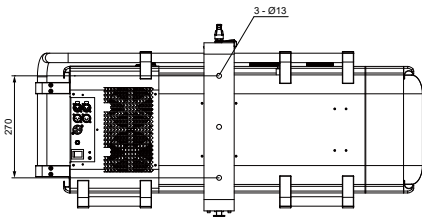
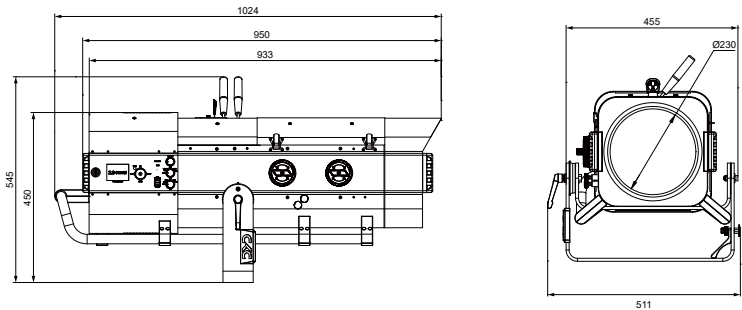


- The lighting fixtures must be installed in a sufficiently ventilated area, at least 0.5m away from adjacent surfaces, to ensure that no ventilation holes are blocked;
- Do not install the lighting fixtures directly on flammable objects;
- The minimum distance between all outer surfaces of the lamp and combustible materials is 0.5m.

## 2. Product Introduction

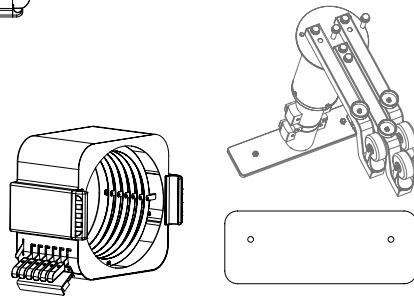
### 2.1 Dimensional drawings

511 × 1024 × 545 mm



### 2.2 Packaging accessories

Name	QTY	
Color gel frame holder	1	PCS
Counterweight block	1	PCS



Tripod is an optional accessory

### 3. Main technical parameters of the equipment

Product execution standards: GB7000.1-2023, GB7000.217-2023, Q/YF-2017

#### ● Electrical parameter

Rated input voltage: AC 200V-240V~ 50Hz/60Hz

Rated power of the entire fixture: 2068W

Input Current: 11.18A 220V

Power factor: 0.84F

#### ● LED lifespan

> 20000 hours

#### ● Optical system

Source: 1800W CW LED (High CRI + High Output) CCT: 6500K

Output: 61000 Lm (High Brightness) / 40000 Lm (High CRI)

CRI: Ra-71 (High Brightness) Ra-95/ R9-95 (High CRI)

Beam angle: 3.5° ~ 18°

#### ● Control and programming

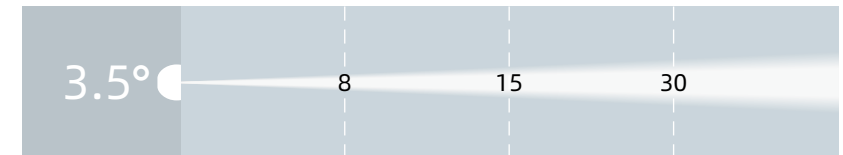
Control channel: 1CH/2CH/7CH/8CH

Protocol: DMX512, RDM

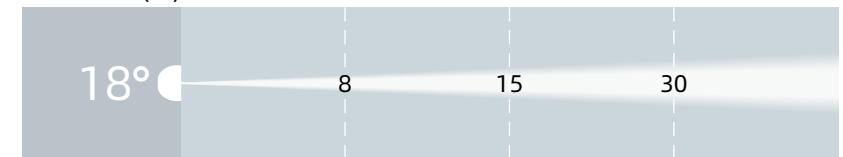
Data connect: 3 PIN XLR (Optional 5 PIN XLR)

#### ● Illumination map

CRI 72 mode

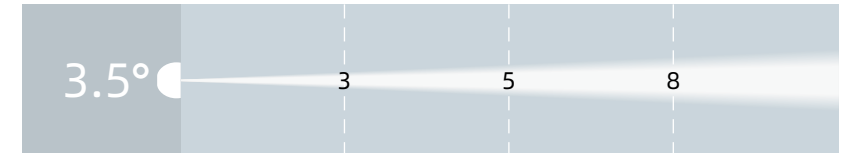


Lux	103000	29200	7324
Distance(m)	0.49	0.92	1.83

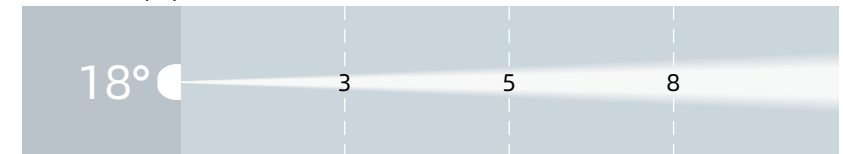


Lux	12900	3669	917
Distance(m)	2.53	4.75	9.50

CRI 95 mode



Lux	65300	18500	4644
Distance(m)	0.49	0.92	1.83



Lux	8190	2330	582
Distance(m)	2.53	4.75	9.50

● **Other effect function**

- Fast electronic strobe: 1~25Hz
- LED Refresh Frequency: 900Hz ~ 25KHz
- Frost: Light frost + Heavy frost
- Plug in Electronic Rotating Gobo
- Electronic dimming/Manual dimming
- Electronic Color wheel (Open / Red / Blue / Green / Orange / Fuchsia)
- Electronic CCT wheel (3000K / 4000K / 5600K / 6500K / 8500K)


Dimmer curve: 4  
Manual Iris

● **Other features and functions**

Weight: 46.6 KG  
55 KG (with counterweight and color frame assembly)

**4. Packaging and transportation**

4.1 Disassemble packaging

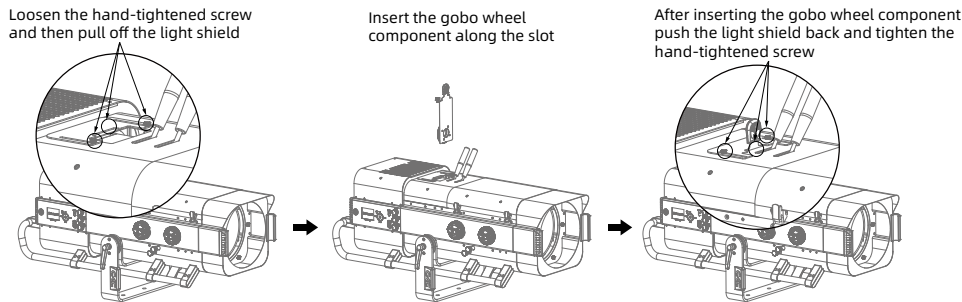
 Notice: After receiving the fixture, please unpack and check for any damage caused by transportation. If there is any damage caused by transportation, please do not use this fixture and contact the local technical personnel or manufacturer as soon as possible.

4.2 Equipment packaging

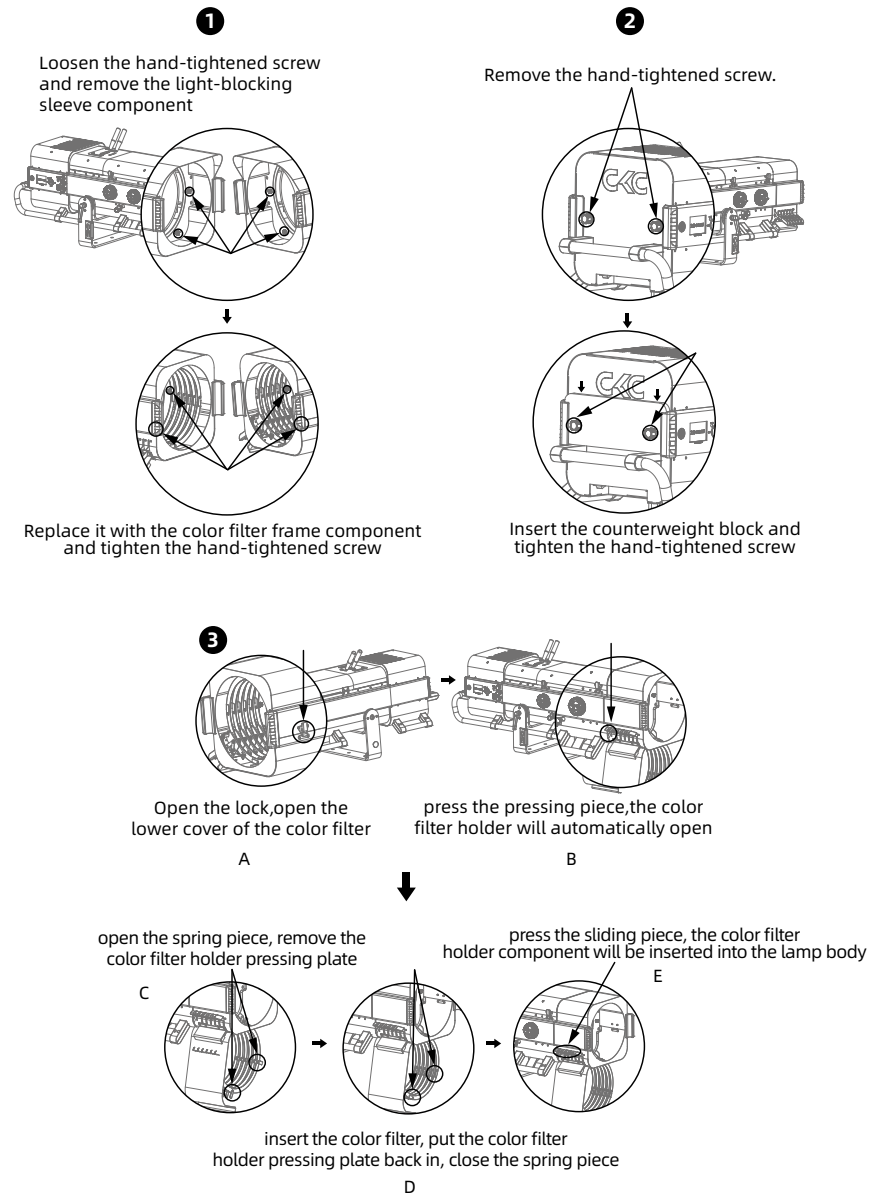
- 1). Disconnect the power supply before packaging the lighting fixtures to allow them to cool completely;
- 2). Flight cases can only be stacked in two layers and are not allowed to be reversed.

**5. Installation Requirements Explanation**

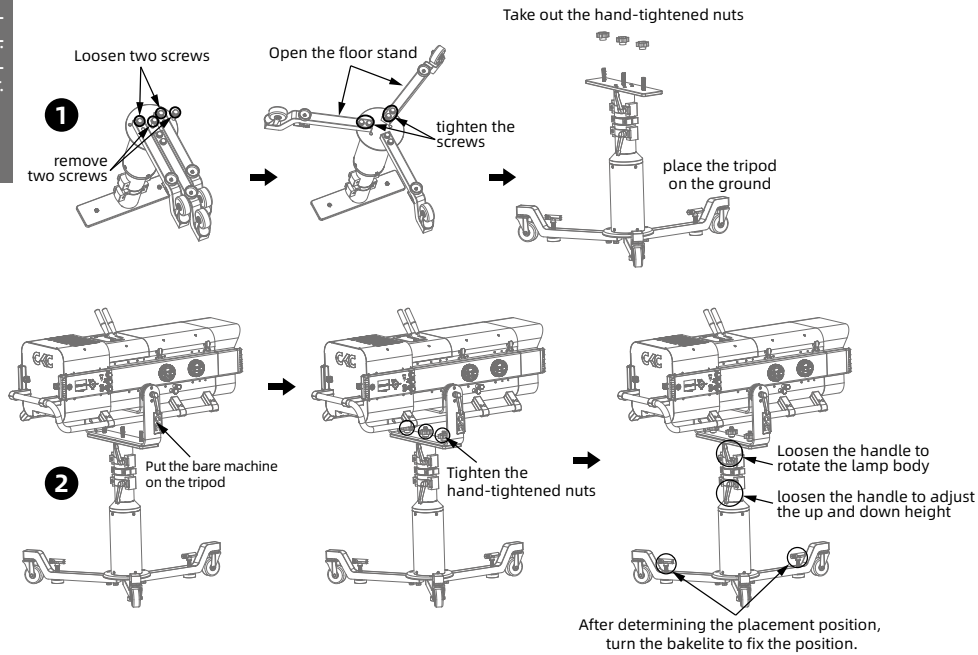
5.1、GOBO Installation



5.2、Color gel frame holder Installation



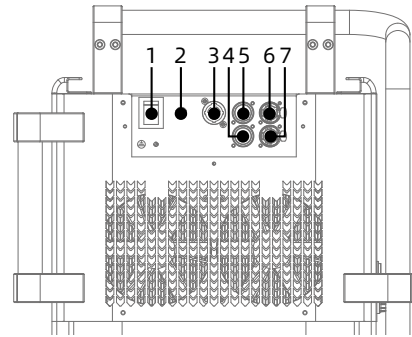
### 5.3. Tripod Stand Installation



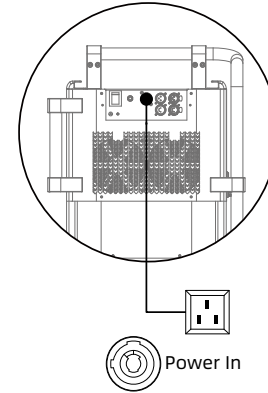
### 6. Power、Signal connect

#### 6.1 Power and signal seat

- 1、Boat-shaped switch
- 2、Overload protector
- 3、POWER IN
- 4、DMX IN
- 5、DMX IN
- 6、DMX OUT
- 7、DMX OUT



#### 6.2 Power connect



#### Connection method:

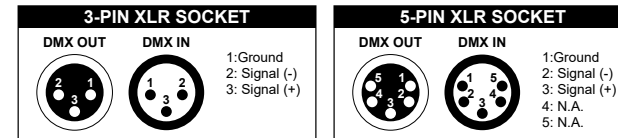
- L**(live wire) - brown wire
- E**(Ground wire) - yellow/green dual color line
- N**(Zero Line) - Blue Line

When connecting the power supply, please note that the voltage and frequency of the power supply must match the voltage and frequency marked on the light fixture. When multiple fixtures are used simultaneously, it is recommended to connect the power supply of each fixture separately, so that each fixture can be individually controlled for power on/off.

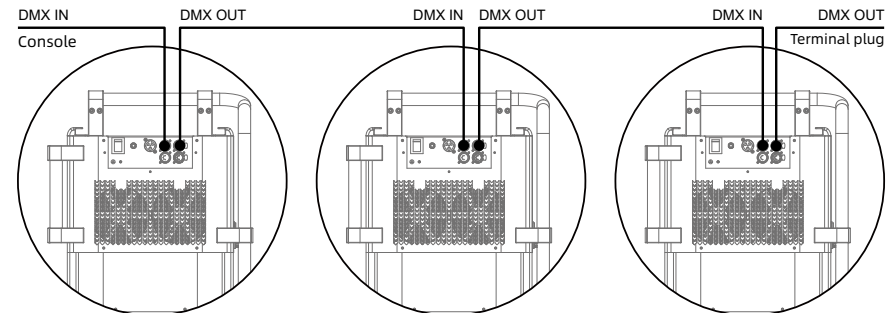
### Warning !

- Do not connect too many fixtures or overload a single power cord;
- Do not use power cords with damaged insulation layers, and do not place power cords on other wires;
- When the fixture is not in use or cleaned, please unplug the power cord; Do not forcefully unplug or drag the power cord directly.

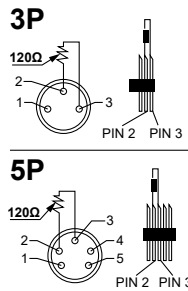
#### 6.3 Signal connect



The lighting fixtures are equipped with standard DMX XLR input and output sockets. Please use DMX512 shielded twisted pair signal cables or Category 5 or above network twisted pair cables for connection. The typical connection distance for DMX signal lines is 150 meters. When transmitting signals over long distances, a DMX512 signal amplifier must be added.

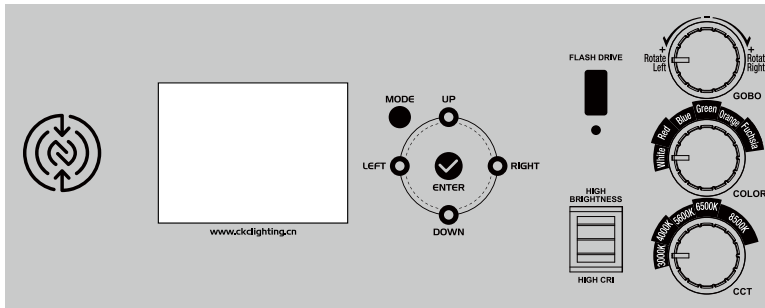


Connect a shielded twisted pair signal cable from the DMX output port of the controller to the DMX input port of the first device, and from the DMX output port of the first device to the DMX input port of the second device, and so on, until all the lamps are connected. Then install a terminal plug on the last 3 or 5 pin socket of each connected lamp output. (Weld a 4/1W, 120 Ω resistor between the 2 and 3 pins of a 3 or 5 core pin XLR plug).



## 7. Control panel

### 7.1 Panel Introduction



- Display: 2.8 inches touch screen;
- NFC: The lighting fixtures do not require power on and can be directly set up, diagnosed, and perform other functions through the CKC app;
- Press the MODE key to view or modify the lighting function settings, and press the UP, DOWN, LEFT, and RIGHT keys to select the function menu;
- Press the ENTER key to confirm your selected function menu, which will take you to the corresponding sub menu in the menu. Each menu item represents a specific function of the lighting fixture (as shown in the table below);
- Press the ENTER key to save your modifications or enter a submenu, and press the UP or DOWN key to modify values (increase or decrease values); Press the MODE key to return to the previous menu or exit.
- Press the MODE key to return to the previous menu or exit.
- GOBO knob: Adjusts the angle and rotation speed of the gobos
- COLOR knob: Adjusts the color, use the knob to quickly switch to the corresponding color output
- CCT knob: Adjusts the color temperature, use the knob to quickly switch to the corresponding color temperature output
- FLASHDRIVE: Allows for firmware updates via USB
- HIGH BRIGHTNESS/CRI: Switches between LED high-brightness and high-CRI modes

## 7.2. System menu

Note: The gray color block is the default setting value

	<i>Software Update</i> <i>Please Wait...</i> <i>Temperture Check</i> <i>LedTemp: 000C</i> <i>Please Wait...</i>	
<b>LEVEL 1</b>	<b>LEVEL 2</b>	
	Signal: None User Mode: Standard	
<b>DMX Settings</b>	DMX Address	001~512
	DMX Mode	Dim/Color/Standard/Extend
	No DMX Status	Hold Black
<b>Encoder Mode</b>	Angle	0-128
	Speed	-63~0~63
<b>Panel.Ctrl</b>	Strobe	000-255
	Dimmer	000-255
	Dimmer Fine	000-255
	CCT	000-255
	Colorwheel	000-255
	GoboRot	000-255
	<b>Standalone Preset.Ctrl</b>	Dim Preset
CCT Preset		Open/3000K/4000K/5600K/6500K/8500K
Color Preset		Open/Red/Blue/Green/Amber/CTB
<b>Reset.Motor</b>	OFF/ON	
<b>Calibrate</b>	Password	Password: 50
	CCT	0-255
	ColorWheel	0-255
	Gobo	0-255
<b>Dim Mode</b>	Standard	
	Stage	
	TV	
	Architecture	
	Theatre	
<b>Temp.C/F</b>	Celsius/Fahrenheit	
<b>Dim Curves</b>	Linear	
	Square	
	Square Inverse	
	S-Curve	
<b>Frequency</b>	900,1000,1100,1200,1300,1400,1500, 2500, 4000, 5000, 6000, 10KHZ, 15KHZ, 20KHZ, 25KHZ	
<b>Fan Set</b>	Head Fan	Auto/High/Low/Silent
	Backlight	01-60M

Information	LCD.Set	Flip Display	OFF/ON
		Key Lock	OFF/ON
		Disp Flash	OFF/ON
		Language	English/Chinese
	DFSE	OFF/ON	
	USB Update	Updating Files	
	Life Time	xxxxxx h	
	Last Run Time	xxxxxx h	
	Time Reset	Passcode:038	
	Temperature	Current	
		Max Resettable	
	DMX Values	Reset	Password: 050
		Strobe	
	Error Logs	Dimmer	
		CCT	
		ColorWheel	
		GoboRot	
	Fan Speed	None	
		CoolFan1	xxxx RPM
		CoolFan2	xxxx RPM
		CoolFan3	xxxx RPM
		CoolFan4	xxxx RPM
		GoboFan1	xxxx RPM
		GoboFan2	xxxx RPM
	GoboFan3	xxxx RPM	
	Software Version	1U:V1.0.1 2U:V1.0.1 3U:V1.0.1	

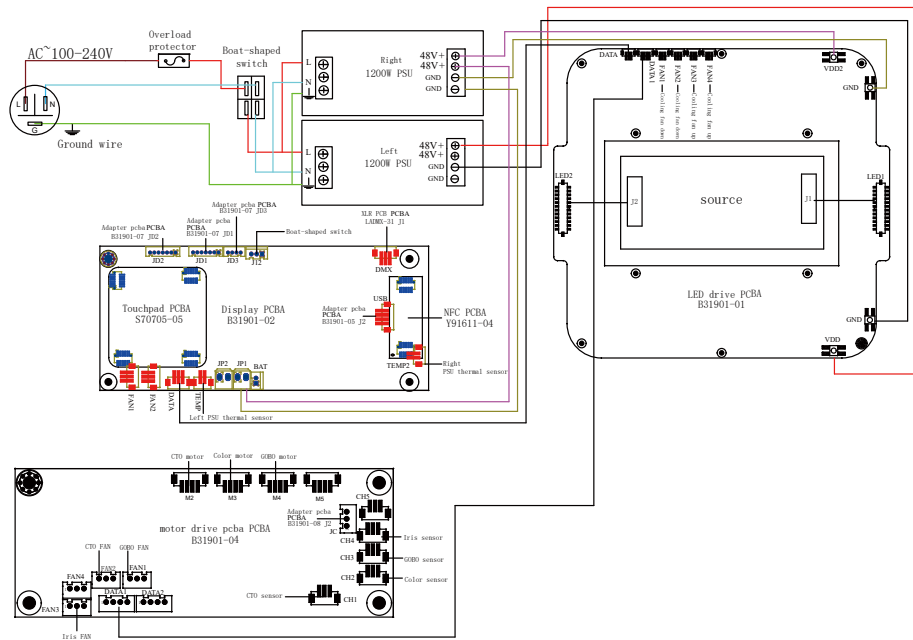
8. DMX channel table:

1CH	2CH	7CH	8CH	Value	Function	REMARKS
		1	1	0-31	Black	Strobe
				32-63	On	
				64-95	Strobe Slow to fast	
				96-127	On	
				128-159	Open and close slowly Slow to fast	
				160-191	On	
				192-223	Random strobe Slow to fast	
				224-255	On	
1	Rod control	2	2	0-255	0-100%	Dim
		3	3	0-255	0-100%	Dim Fine
				0	6500K	
				68	8500K	

Panel control	1	4	4	114	5600K	CCT
				160	4000K	
				235	3000K	
	2	5	5	0	No function	Color Wheel
				60	Red	
				98	Blue	
				136	Green	
				180	Orange	
	6	6	6	255	fuchsia	Gobo
				0-5	Idle	
				6-127	Fixed-angle rotation	
				128-189	Clockwise	
	7	7	7	190-193	Stop	Dimming delay
				194-255	Counter-clockwise	
				0-20	Standard	
				21-40	Stage	
				41-60	TV	
				61-80	Architectural	
				81-100	Theatre	
	101-255	No function				
	8			0-29	Idle	Control
				30-39	Fan Mode Auto	
				40-49	Fan Mode High	
				50-59	Fan Mode Low	
				60-69	Fan Mode Silent	
				70-99	Idle	
				100-101	900	
102-103				1000		
104-105				1100		
106-107				1200		
108-109				1300		
110-111				1400		
112-113				1500		
114-115				2500		
116-117	4000					
118-119	5000					
120-121	6000					
122-123	10K					
124-125	15K					
126-127	20K					
128-129	25K					
130-200	Idle					
201-210	Dimmer Curve Linear (default)					

211-220	Dimmer Curve Square
221-230	Dimmer Curve Inverse Square
231-240	Dimmer Curve S-Curve
241-250	Reset Motor
251-255	Idle

## 9. Control circuit diagram



## 10. Regular maintenance

### 10.1 Cleaning and maintenance

Lighting fixtures require daily cleaning and maintenance, and their service life largely depends on the operating environment and standards. If you have any questions, please consult our technical engineers for advice. Maintenance and repair work not included in this book should be entrusted to our qualified technical engineers.

**Attention!** Damage caused by dust, e-liquid, or other reasons, as well as abnormal use, is not covered by the warranty.




### Warning !

Before opening any lid, disconnect the power supply. Cleaning optical components requires gentle wiping as the coating surface is prone to scratching. Do not use damaging liquids or hard objects, as they may damage the plastic or coating surface.

- When the lens is cracked or otherwise damaged, it should be replaced in a timely manner;
- When the brightness significantly decreases, the LED may have reached its expiration date and should be replaced in a timely manner;
- When the fixture cannot start, please check if the fixture power fuse is blown. If it is blown, a fuse of the same specification must be used for installation;
- When this situation occurs, please check whether the fan is running normally, whether the fan and fan mesh are clogged with dust, identify the fault and repair it before starting the fixture. Please note that only qualified technicians are allowed to carry out maintenance work;

### 10.2 Fault analysis and handling

Fault description	Analysis	Processing method
No action after power on	Check if the power switch is turned on	Turn on
	Check if the fuse is blown	Replace
	Check if the output of PSU is normal	Detecting voltage
	Check if poor contact in the internal circuit	Reconnect
Uncontrolled lighting fixtures	Check if the DMX signal cable is connected correctly (If there is no signal, the display screen will flash)	Reconnect or replace
	Check if the address code is correct and if the DMX mode of the lighting fixture matches the settings	Reconfirm
	The main control PCB is damaged	Replace
Not bright	LED aging or damage	Replace
	Power PCB malfunction	Check/ Replace
	Loose or poor contact of the circuit	Reconnect
	PSU malfunction	Replace
Automatically turn off or dim the lights	LED aging	Replace
	Damaged cooling fan or abnormal wind speed	Replace
	Check the power output of the fan	Check/ Replace
	The temperature control switch is damaged	Replace

Weak light efficiency and uneven light spot	LED aging	Replace
	LED not centered with the lens	Adjust LED
	The optical mirror has accumulated dust or stains	Clean
	The optical mirror is damaged	Replace
Impure color	Weakening of light efficiency	Replace led PCB
fan stops rotating	Check if the fan leads are installed properly or disconnected	Re connect
	Check if the fan is damaged	Replace
	Check if there are any other interfering objects within the operating range of the fan	Adjust
 <b>Attention!</b> The above analysis is for abnormal reference only. Non professionals are not allowed to disassemble and repair the machine		

