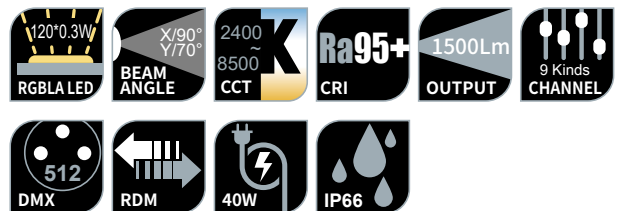


# LIGHT IT LIKE IT



## Footslim M



Adopts 120×0.3W RGBLA LED  
 Output: 1500Lm  
 Field angle: 90×70°  
 CCT: 2400 ~ 8500K  
 CRI: 95+

#### OPTIC

- Source: 120×0.3W RGBLA LED
- Output: 1500 Lm
- Field angle: 90×70°
- CCT: 2400 ~ 8500K
- CRI: 95+
- Source lifetime: >20000 H

#### EFFECT

- Strobe: 1 ~ 25Hz
- LED refresh rate: 900Hz~25KHz
- Dimmer Curve: 4 kinds

#### CONTROL & PROGRAM

- Channel: 1 / 4-1 / 4-2 / 11 / 16 / 13 / 20 / 19 / 32 CH
- Protocol: DMX512, RDM
- Data connector: 3 PIN XLR
- Display: OLED display

#### SOFTWARE

- Via DMX signal to update
- Intelligent temperature protection to ensure LED service life

#### HOUSING

- Aluminum alloy structure
- Natural heat dissipation

#### POWER CONSUMPTION

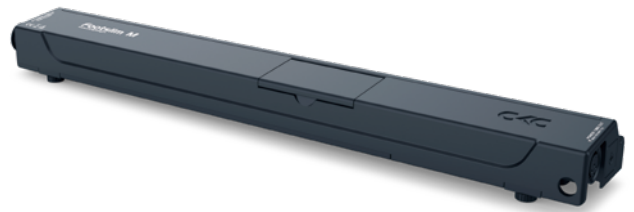
- Voltage: AC 100V~240V 50/60Hz
- Rated power: 40 W

#### OTHER

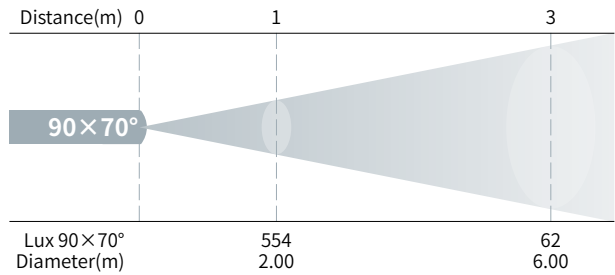
- IP rating: IP66
- Work environment: -40°C ~ 45°C
- Startup environment: -20°C ~ 45°C

#### SIZE & WEIGHT

- Size: 500 × 73 × 46 mm
- N.W: 2 kgs



#### PHOTOMETRICAL DATA



#### OPTIONAL ACCESSORY

