

LIGHT
MARKET



Footslim X



Adopts 240×0.3W RGBLA LED
 Output: 3000Lm
 Field angle: 90×70°
 CCT: 2400 ~ 8500K
 CRI: 95+

OPTIC

- Source: 240×0.3W RGBLA LED
- Output: 3000Lm
- Field angle: 90×70°
- CCT: 2400 ~ 8500K
- CRI: 95+
- Source lifetime: >20000 H

EFFECT

- Strobe: 1 ~ 25Hz
- LED refresh rate: 900Hz~25KHz
- Dimmer Curve: 4 kinds

CONTROL & PROGRAM

- Channel: 1 / 4-1 / 4-2 / 11 / 16 / 13 / 20 / 19 / 32 / 31 / 56 CH
- Protocol: DMX512, RDM
- Data connector: 3 PINXLR
- Display: OLED display

SOFTWARE

- Via DMX signal to update
- Intelligent temperature protection to ensure LED service life

HOUSING

- Aluminum alloy structure
- Natural heat dissipation

POWER CONSUMPTION

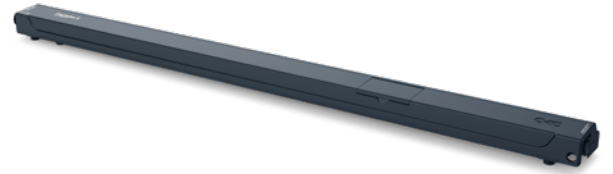
- Voltage: AC 100V~240V 50/60Hz
- Rated power: 70 W

OTHER

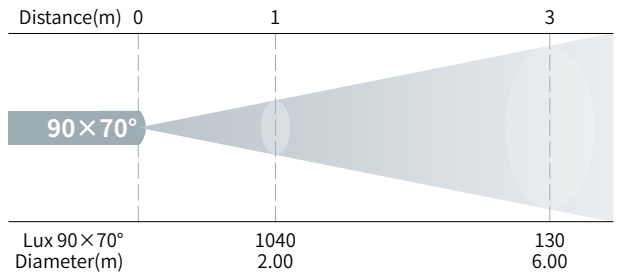
- IP rating: IP66
- Work environment: -40°C ~ 45°C
- Startup environment: -20°C ~ 45°C

SIZE & WEIGHT

- Size: 1000 × 73 × 46 mm
- N.W: 3.3 kgs



PHOTOMETRICAL DATA



OPTIONAL ACCESSORY

